

# COPYRIGHT:

DEUTSCH

DIESE DRUCKSCHRIFT UND ALLE IHRE BESTANDTEILE IST URHEBERRECHTLICH GESCHÜTZT.

ABBILDUNGEN, GRAFISCHE DARSTELLUNGEN, TEXTE ODER DIE DRUCKSCHRIFT INSGESAMT ODER IN TEILEN DÜRFEN NICHT OHNE VORHERIGE SCHRIFTLICHE GENEHMIGUNG NACHGEDRUCKT ODER SONST REPRODUZIERT WERDEN (Z. B. AUF CD-ROM ODER IM INTERNET).

WENN SIE DIESE PDF-DATEI FÜR IHREN PERSÖNLICHEN GEBRAUCH VON UNSERER INTERNET-SEITE KOPIERT HABEN, MÖCHTEN WIR DARAUF HINWEISEN, DASS ALLE DORT ZUR VERFÜGUNG GESTELLTEN DATEIEN OHNE JEDEN WEITERN HINWEIS AUF DEN NEUSTEN TECHNISCHEN STAND GEBRACHT WERDEN. DIE ÄNDERUNG VON TECHNISCHEN DATEN UND LIEFERUMFANG IST DAHER VORBEHALTEN.

# COPYRIGHT:

## ENGLISH

ALL ARTWORK, PICTURES AND TEXTS ARE COVERED BY OUR COPY-RIGHT.

THEY MUST NOT BE COPIED FOR REPRODUCTION (E.G. ON CD-ROM DISKS OR INTERNET-SITES) OR USED IN THEIR ENTIRE FORM OR IN EXCERPTS WITHOUT OUR PREVIOUS WRITTEN AGREEMENT.

IF YOU ARE DOWNLOADING PDF-FILES FROM OUR INTERNET HOME-PAGE FOR YOUR PERSONAL USE, MAKE SURE TO CHECK FOR UPDATED VERSIONS.

WE CANNOT TAKE ANY LIABILITY WHATSOEVER FOR DOWNLOADED FILES, AS TECHNICAL DATA ARE SUBJECT TO CHANGE WITHOUT NOTICE.

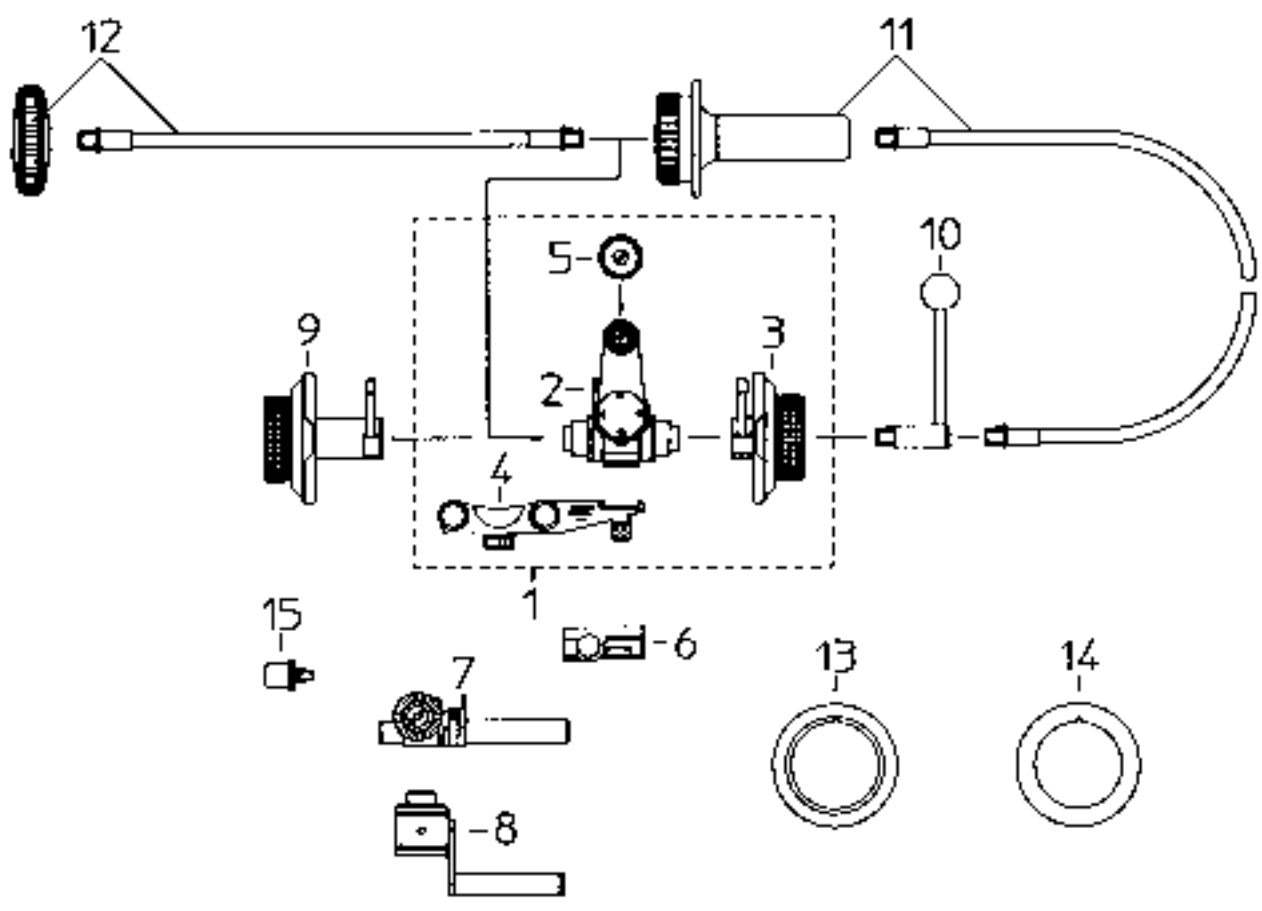
# ARRI



LFD



Lightweight Focus Drive LFD System



Lightweight Focus Drive LFD System		
Item	Ident-No.	Description
1	K0.59996.0	Lightweight follow focus set for ARRIFLEX 16 SR consisting of item 2-5
2	K2.47238.0	Focus drive LFD
3	K2.47246.0	Focus knob left FK-1
4	K2.47249.0	Bracket FH-2 (for lightweight support)
5	K2.47252.0	Gear for prime lenses and 16 mm zoom-lenses (GEAR-2)
6	K2.47299.0	Bracket FH-1 (for single rod)
7	K2.47245.0	Single rod support SRS-4 (for ARRIFLEX 435 and 35 III), Pos. 6 necessary
8	K2.47290.0	Single rod support SRS-5 (for ARRIFLEX 535 / 535 B), Pos. 6 necessary
9	K2.47250.0	Focus knob right FK-2
10	K2.32730.0	Focus lever
11	K2.32731.0	Flexible shaft long (850 mm)
12	K2.34100.0	Flexible shaft short (330 mm)
13	K4.47621.0	Marking disk beveled (spare)
14	K2.47292.0	Marking disk flat
15	K2.47288.0	Square adapter for connecting flexible shaft parallel to optical axis
16	K2.47300.0	Case for LFD and accessories

## Lightweight Focus Drive LFD

The Lightweight Focus Drive LFD is a compact unit for use with prime lenses on 35 and 16 mm cameras, as well as with zoom lenses on 16 mm cameras. With various brackets, the Lightweight Focus Drive can be attached directly to the 35 mm cameras or used on the lightweight support of the 16 SR.

The components of the LFD system are available individually or as a lightweight follow focus set for 16 SR, comprising the focus drive, the left focus knob, the drive gear and the bracket for the lightweight support. If the Production Matte Box MB-19 is used, the right focus knob (longer knob) is required.

The flexible shafts and the focus lever can be coupled to the focus knob or directly to the focus drive.

The beveled marking disk facilitates reading the scale from an angle.

Weight: Lightweight Follow Focus Set 17.3 oz.



ARNOLD & RICHTER CINE TECHNIK

TÜRKENSTR. 89 • D-80799 MÜNCHEN • TEL. (089) 3809-0  
FAX (089) 3809 - 1244 • <http://www.arri.com>